



Leaf spotters

As you walk along, can you spot these different shaped leaves? Use the anagrams below to help you identify them. Write the names in the boxes below.



ehecb



mlei

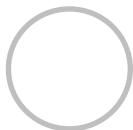
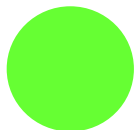
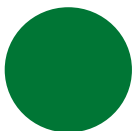
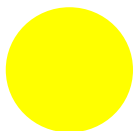
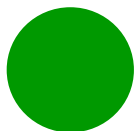
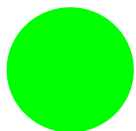


epmla



Colour bingo

On your journey down the avenue of trees you will see lots of different colours, some on the trees and others on the ground. Mark off the different colours as you see them. Can you tick off a line? Or even get a full house by spotting all of them?



www.avongorge.org.uk

facebook.com/avongorge



The Downs Committee



Bristol Zoological Society



National Trust



Forestry England



The Downs Spring Family Trail

For adults and their children to enjoy between March and May

Why not have a go at the activities on our trail and discover more about the Downs?



Things to bring!

- ☒ an adult
- ☒ sensible, comfy shoes
- ☒ drink and snack
- ☒ sun cream and hat
- ☒ pencil
- ☒ waterproof clothes if wet



Spring candles

Some of the trees around The Downs Café are horse chestnut trees. In spring their white flowers grow tall like candles. Can you think of words to describe these trees? Choose your favourite word and use each letter to create your own poem in the space below.



L ike little hands

E ach leaf is as green

A s the grass with long

F ingers on each one.

2 Springo bingo!

Keep your eyes peeled for these signs of spring. Tick them off as you see them.



☐ dandelion



☐ butterfly



☐ celandine



☐ buds on trees



☐ primrose



☐ bumblebee



☐ hawthorn blossom



☐ bird singing

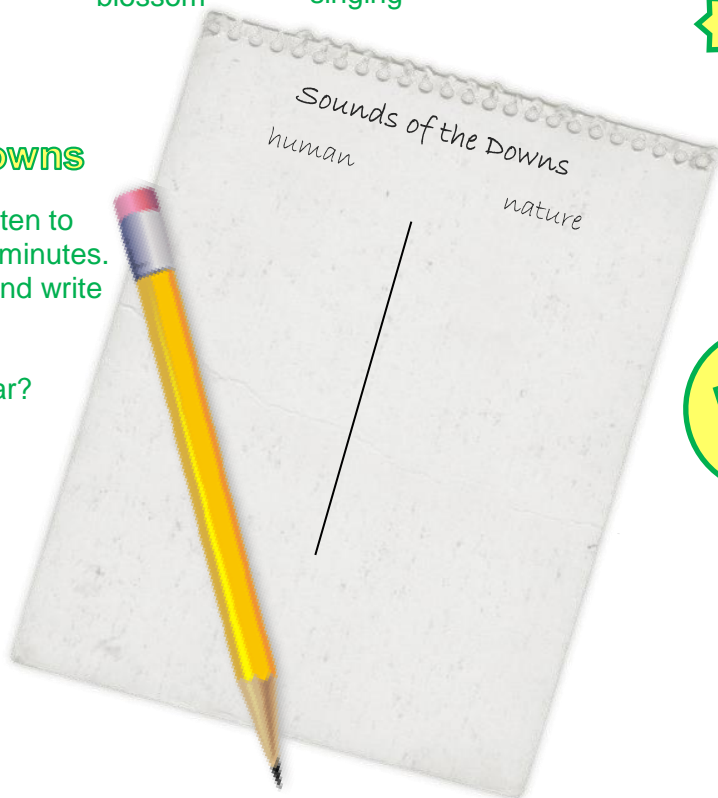
3 Sounds of the Downs

Find a quiet place to sit and listen to the noises around you for two minutes. Each time you hear a new sound write it down.

How many sounds did you hear?

Can you divide them into 'human sounds' and 'nature sounds'?

Which are there more of?



4 Honking hawthorn!

Hawthorn blossom is also known as May flower and the Downs were once famous for their dazzling display. The blossom is usually white but we also have pink blossom and some that is almost red! Can you find all three colours?

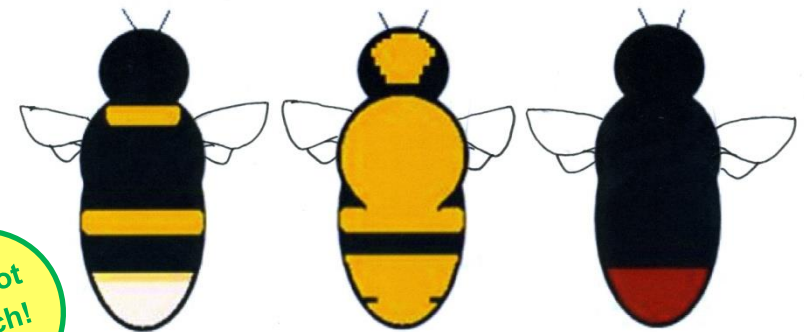


Some people say that the hawthorn blossom smells like rotting flesh, other people think that it smells lovely! Have a sniff - what do you think it smells like?

Can you find any other blossoms that smell?

Insects love hawthorn flowers – they're full of yummy nectar!

5 Busy buzzy bumblebees



Do not touch!

☐ buff-tailed bumblebee

☐ common carder bee

☐ red-tailed bumblebee

Bumblebees are very important insects for pollination but unfortunately some people are scared of them. If you look carefully, bumblebees are beautiful and interesting insects. Different species of bees have different markings. Have a look at the different patterns on the bee bodies above. How many can you spot?



Sounds of the Downs

Two minutes of silence can feel like a long time - Keep going for as long as your child is interested! Listen out for the animals in the zoo. You can often hear the lion and the gibbons from here. Did you hear anything else that was unexpected?



Honking hawthorn!

Another plant that has a strong smell, and should be out at the end of spring, is the flower of the elder tree, known as elderflower. You may find the smell familiar as it can be found in drink cordials and was traditionally made into elderflower champagne. What other plants can you find that smell?

Your child may not be familiar with the use of the word 'honking'! This is a good opportunity to encourage your child to think of all the different words there are for '*smell*'. How many can you think of between you? Can your child put them into a sentence?



Busy buzzy bumblebees

What is pollination? At this time of the year you can see bumblebees feeding on the nectar from flowering plants. As they feed, their furry bodies pick up the small grains of pollen from the flower. When they move on to the next flower some of the pollen falls off and onto the new flower. The transfer of pollen allows the flowering plant to make seeds that grow into new plants. Pollination is one of the reasons that bumblebees are so important. Do not be afraid of the bumblebees - your child will follow your example. Keep a respectful distance away and look but do not touch.



Leaf spotters

The answers to the anagrams are: beech, lime and maple.



Colour bingo

This is an excellent opportunity to encourage your children to find interesting ways to describe the colours they see. Ask your children to compare using **like** or **as** – '*as green as bright green grass*' – and add describing words – '*bright sunshine yellow*'. Start them off with a few simple examples of your own and then build up sentences.

We hope you enjoyed the trail. Why not try out our other seasonal trails?



Spring Family Trail Notes for Adults

A guide for grown-ups



Before you start

Once you embark upon this trail you could be out and about for up to 2 hours. The trail begins near The Downs Café and there are toilets situated on the other side of the Water Tower, a short walk from here. **BEWARE!** There are no other toilets once you start the trail! Watch out for bikes on the cycle path in front of The Downs Café.



Supporting your child on the Spring Trail

This section is designed as a guide to enable you and your child or children to get the most out of the trail. We highly recommend reading this section through before you start the trail so you can stay one step ahead of your little ones!



Spring candles

Acrostic poems are often used in school. The first letter in each line is made up from the letters of another word, as shown in the example. Encourage your child to look at the trees and think of words to describe them. Make a list and then choose your favourite to write the poem.



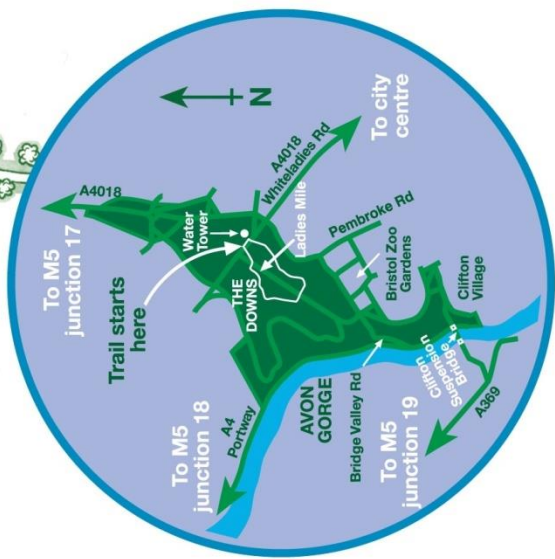
Springo bingo!

When looking for birds, butterflies and other insects it is worth sitting or standing still for a few minutes to see what comes your way. Once you stop moving the animals will be more likely to ignore you and carry on with what they want to do and you will get a better look at them. Please do not pick up or try to catch any wildlife.



Spring Family Trail Map

The Avon Gorge and Downs Wildlife Project runs a variety of family and children's events throughout the year. Details can be found at www.avongorge.org.uk www.facebook.com/avongorge or call 0117 9030609



Key

- Spring trail
- Bench
- Ditch
- Quarry
- Bus Stop

Toilets

The nearest public toilets can be found beside the Water Tower where there are baby changing facilities and toilets for disabled people.

Safety

Please take care when crossing roads.
Beware! Some sections of the trail can be muddy and slippery after it has rained.